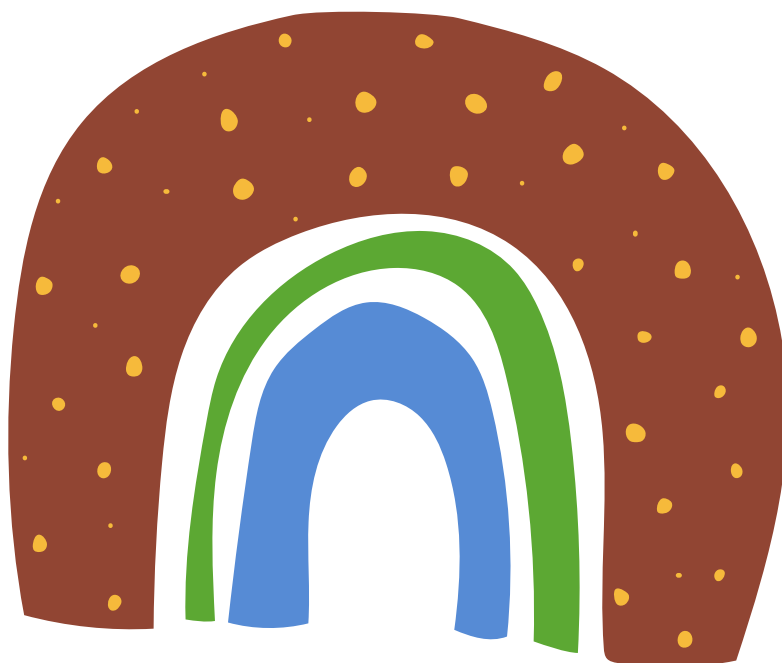




ANNUAL UPDATE 2020



the
UNDERGROUND
collaborative



KAYA WANJU | HELLO WELCOME

The Underground Collaborative acknowledges Aboriginal and Torres Strait Islander People as the first inhabitants of the nation and the traditional custodians of the lands where we live, learn and work.

We pay our respects to ancestors and Elders, past and present and are committed to a positive future for the Aboriginal community.

-  www.theunderground.org.au
-  katie@theunderground.org.au
-  0402 777 241
-  PO Box 1421, East Victoria Park, WA 6981
-  @theundergroundcollab
-  @theundergroundcollab
-  @theundergroundcollab

COVER ART:
Deb, St Pats client

“A person is a person whether they live in a home or a box.”

WHY WE EXIST

The Underground Collaborative (TUC) is a social enterprise that exists to break the cycles of homelessness by providing employment and housing solutions.

OUR MISSIONS

We aim to achieve our vision through:

Education

We are passionate about breaking stigmas, and raising awareness throughout our community.

We believe education is a contributing catalyst for change in breaking the societal taboos – when we understand, we connect. When we connect we are more compassionate. We have a greater awareness and are able to communicate with those in need, but also with the wider community to generate a circular economy of knowledge.

Employment

Our first beachhead strategy is Ground+Co, our cafe which trains and employs those experiencing disadvantage, and provide supportive pathways for transition into permanent employment.

We believe employment can help to break the cycle of homelessness by providing people with the necessary income, self-esteem, and sense of community connection. This will consequently enable them to access and, importantly, to maintain stable housing.

Empowerment

We have a vision which sees empowering our wider community, to empower those less fortunate. Through supporting our initiatives, the community are able to connect to the cause, and see the visible benefits they're making to someone's life.

When we empower others, we ultimately empower ourselves.

We believe creating change in our own lives empowers us to explore ways of helping to bring about beneficial change in the lives of others.

Through all of the above, we believe these small acts will lead to ripples and waves of change. Our community will feel inspired to take action, to collaborate and work together to help break the cycles of homelessness.

WHO WE ARE

THE BOARD

MARIUS VAN DER MERWE
Chairperson (exiting)



KATIE LIEW
CEO, Secretary



BROOKE DRAPER
Board Member



JEFF HEALY
Board Member



TAMARA COOK
Board Member



We believe...

In dignity, respect and freedom | In the inherent value of people | In human rights

We believe we can break the cycles of homelessness.

We strive towards applying these beliefs.

It is our motivation for everything that we do.

It is simple, *but this is our 'WHY'*

So The Underground Collaborative community,

It goes without saying this year has been one of the most challenging for many, including The Underground Collaborative (TUC); and while COVID-19 really rocked our world, it's important to recognise and celebrate what we have been able to achieve in 2020;

- In February, The Underground Collaborative participated in the Westpac Foundation Board Observership Program, which provides the opportunity for a senior corporate professional to attend our Board meetings as an Observer for 12 months.



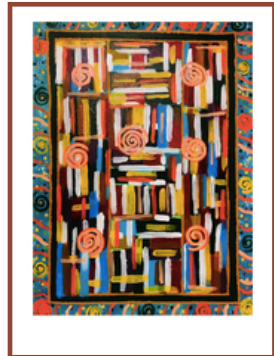
We are so thrilled to have Matt Delmenico, the Regional General Manager at Westpac join our Board as part of the Program.

- Also in February, our (exiting) Chair Marius, participated in the CA ANZ (Chartered Accountants Australia New Zealand) Mentor Exchange Program which connects the skills and knowledge of experienced CA members with mentees who want to boost their career development.

This included Evan Schmedje, Associate Director at CBA observing and participating in all our board meetings and activities which we very much enjoyed and valued.

- In May, I joined the WA Social Enterprise Council (WASEC) as a founding Board member, advocating for and working with new and existing social enterprises to create a thriving, collaborative social enterprise sector in WA.
- In July, we signed an MOU with Anglicare WA to train and employ young people through their Street Connect program which works to reduce the amount of time young people experiencing homelessness spend on Perth streets.

- In October, we launched greeting cards in partnership with St. Patrick's Community Support Centre. Their clients provided their beautiful artwork as a means to share their homelessness journey, with part proceeds from the sale of every card going to these special and talented artists.



Education is an important part of our mission to help society understand on a more meaningful level; to create a greater human connection and break the stigmas attached to homelessness.

Indeed, this year has been interesting to say the least and I am so incredibly grateful to our TUC family who have continued to be part of our journey, especially this year.

I'm very proud and honoured to be supported by TUC's wonderful Board members, whose leadership and commitment have carried us through this turbulent time. It is also with a very heavy heart we bid farewell to Marius, our very much loved and cherished Chair who has been with the organisation since its birth in 2017, as he steps down to spend time with family.

Despite the 2020 year that was, I'm so excited for the future and to continue sharing the impact and lives you have helped change.

With a very full and grateful heart,
- thank you

Katie Liew | Founder, CEO



OUR SUPPORTERS AND FUNDERS



**Our heartfelt thanks and gratitude go to
the following for their support;**

• Anglicare WA • Brookfield Properties • Butler Settineri •
Chris' Kitchen • CT Group • Dorado Property • EY • Five
Senses • GMA Garnet • ibis Styles East Perth • ITS
Management • Kingdom Cupcakes • K&L Gates • Known
Associates Events • Matrix Insurance • Milano Menswear •
PWC • Quest East Perth • The Ritz-Carlton Perth • Vivacity
Marketing • Westpac • Zonta House • And to all our
individual supporters and anonymous donors! •

OUR JOURNEY + IMPACT



In October 2019, Brookfield Properties took a chance on us and let The Underground Collaborative set up Billie, our coffee cart at the base of the EY Building in the Perth CBD.



Through the incredible support of our TUC family and the Brookfield Properties team, Ground+Co provided employment for six people, three of which were homeless as a result of family and domestic violence.



Because of our supporters' **belief** in us, **this is the impact we have been able to make...**

OUR JOURNEY + IMPACT



Mary* is from Punjab in India and came to Australia following an arranged marriage.

Her ex-husband became abusive once arriving to Perth, which largely resulted from his mother who was controlling and dominated their relationship.

From her time at Ground+Co, Mary has had:

- + 155 hours of employment
- + \$4,400 wages + super



Chloe* came to Perth in 2013 with her then husband, leaving behind her family and corporate job in Malaysia.

Two years into their time in Australia, her partner turned to alcohol and became abusive. She was not allowed to work, have friends or leave the house.

From her time at Ground+Co, Chloe has had:

- + 278 hours of employment
- + \$8,251 wages + super



Rinjani came to Australia from Indonesia, and while she didn't share much about her past, she has an incredibly positive outlook to the future, despite the trauma she has experienced.

From her time at Ground+Co, Rinjani has had:

- + 112 hours of employment
- + \$3,307 wages + super

WHERE ARE THEY NOW?



Before, Mary:

- had no dreams or aspirations;
- was not motivated;
- wasn't serious about work as she was receiving Centrelink;
- wasn't sleeping well and constantly tired;



After two months, Mary:

- was feeling more confident and realised her English "wasn't that bad";
- has increased conversational skills;
- has dreams for her future; to live a simple life, work full-time and get married again;
- **has since gained permanent employment at Chris' Kitchen!** 🎉



Before, Chloe:

- didn't feel empowered;
- felt unsure and very lost;
- didn't have any financial independence;
- wasn't sleeping well, always worried 'what's next';
- experienced a lot of anxiety around not having a job;
- was frugal in purchasing fruit and vegetables



After three months, Chloe:

- feels more stable;
- has improved mental health;
- has improved sleep quality;
- completed her Certificate in Hospitality with Vocational Training Services in October 2020, which included undertaking her internship at The Ritz-Carlton;
- **has since gained permanent employment at The Ritz-Carlton!** 🎉



Unfortunately Rinjani had to return to her home town of West Java one month after working at Ground+Co; however with the confidence she gained and money earned, she was able to purchase a dough mixer for her bombolini business after **becoming a businesswoman in her own right!** 🎉

"I always remember how you trusted me to become part of your team, and your care also supported me so well, even though you know I had so many weaknesses and no knowledge / experience about working in Aussie and how to handle coffee. I owe you life."



PLANET



+ 960 take-away cups saved from landfill

+ \$480 in our Freedom Jar

from 14 October 2019 - 12 March 2020

Not only does it help the environment every time customers BYO cup, but for each one that comes through Ground+Co, instead of giving a discount (which many cafes offer), Ground+Co contributes 50c towards bond for someone / a family escaping family and domestic violence.

The amount required for bond is approximately \$1k and with \$480 in our Freedom Jar to date, we're nearly half way there!

We know we need to do better. The cafe still uses take-way coffee cups and single-use items, but research and experience shows we would lose the majority of our customers, impacting operations and consequently the hours we could provide to our Program Participants. That said, we're doing everything we can to educate and encourage customers to go green.

+ 100% produce sourced in Australia, with over 80% from WA.

FAREWELL BILLIE!



On 1st November 2019 we launched Ground+Co with a bang! ... and by 18th March 2020 we made the difficult decision to turn off our coffee machine and pack everything away in the interest of our employees' health, and that of the public.

In amongst Christmas 2019, the new year, shutting shop for one week as part of our retail licence and COVID-19, our achievements as demonstrated above, in collaboration with partners is one to definitely celebrate and to be proud of.

If this is what we can do through all this disruption in such a short amount of time, think of the magnitude of impact we can create if everything went to plan!

To this end, we bid a very fond farewell to our beloved Billie, the small but mighty coffee cart that allowed us to transition two beautiful, hardworking and incredibly resilient women to permanent employment. This is the first step in breaking the cycles of homelessness; the next is to help secure stable housing futures and we are looking forward to sharing updates on this.

Thank you so much to everyone who has been part of this chapter and helped make all of this happen. We're excited for the next one as we continue to achieve our missions of Educating, Empowering and Employing and seeing our vision come to life as we work together to break the cycles of homelessness.